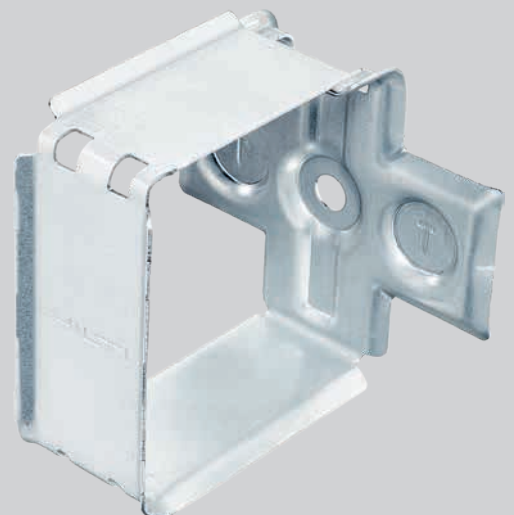




# X-ECH-FE MX

**Metal cable holder**

Data Sheet




# CONTENTS

<b>1</b>	<b>Product information</b>	<b>3</b>
1.1	Product description	3
<b>2</b>	<b>Application conditions</b>	<b>3</b>
2.1	Application examples	3
2.2	Base materials	3
2.3	Load conditions	3
2.4	Environmental conditions	4
<b>3</b>	<b>Reference list</b>	<b>4</b>
3.1	Approval and certificates	4
<b>4</b>	<b>Product data</b>	<b>4</b>
4.1	Dimensions	4
4.2	Material properties for carbon parts	5
<b>5</b>	<b>System recommendation</b>	<b>5</b>
5.1	Fastener system recommendations	5
<b>6</b>	<b>Application requirements</b>	<b>5</b>
6.1	Base material properties	5
6.2	Service properties	5
<b>7</b>	<b>Performance data</b>	<b>6</b>
7.1	Recommended loads under quasi static/static and fire loading	6
<b>8</b>	<b>Quality assurance</b>	<b>6</b>
8.1	Fastening inspection	6
<b>9</b>	<b>Ordering information</b>	<b>6</b>
9.1	Item number and description	6

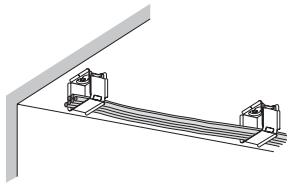
# 1 PRODUCT INFORMATION

## 1.1 Product description

Designation	Features
<p>X-ECH-FE MX</p> 	<ul style="list-style-type: none"> <li>• Fast, simple and reliable installation of fire-rated safety cables</li> <li>• General building inspectorate approval in accordance with DIN 4102-12 available for a wide range of cables with circuit integrity rating</li> <li>• Can be used on ceilings and walls</li> <li>• System with long spacing distance for economical installation</li> <li>• Designed to make overhead fastening easier and more convenient</li> </ul>

# 2 APPLICATION CONDITIONS

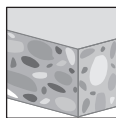
## 2.1 Application examples



Element to concrete

Application	Description
Circuit integrity system	Circuit integrity system (CIS) application specified by German guideline 'Allgemein bauaufsichtliches Prüfzeugnis' (AbP)
Non-circuit integrity	Non-circuit integrity system application in escape routes specified by the German guideline 'Muster-Leitungsrichtlinie' (MLAR)

## 2.2 Base materials



Concrete

## 2.3 Load conditions



Static/quasi-static    Fire

## 2.4 Environmental conditions



Dry indoor

- For more details about environmental conditions, please refer to the [Hilti Corrosion Handbook](#).

## 3 REFERENCE LIST

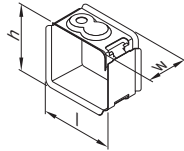
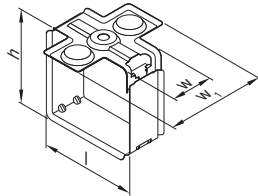
### 3.1 Approval and certificates

Authority	Approval/certificate no.	Date of issue
Materialprüfanstalt (MPA IBMB)	<a href="#">P-2401/198/16-MPA BS</a>	21 Feb 2025
Materialprüfanstalt (MPA NRW.)	<a href="#">P-MPA-E-16-010</a>	25 Jan 2023
DMT GmbH & Co.KG	<a href="#">P.1023 DMT DO</a>	7 Mar 2022

- Not all information presented in this product data sheet might be subject to approval/certificate content
- Information presented in this product data sheet might be based on Hilti Technical Data
- Please refer to approval/ certificate for further information

## 4 PRODUCT DATA

### 4.1 Dimensions

Technical drawing	Fastener	Element height h [mm]	Element length l [mm]	Element width w [mm]	Element width w <sub>1</sub> [mm]
	X-ECH-FE 15 MX	55.5	60	35	-
	X-ECH-FE 30 MX	77	80	35	84

## 4.2 Material properties for carbon parts

Element	Component part	Material	Coating	Coating thickness [µm]	Corrosion category
X-ECH-FE MX	Element	Carbon steel	Zinc coated	≥ 5	C1

• Corrosion category according to EN ISO 9223.

## 5 SYSTEM RECOMMENDATION

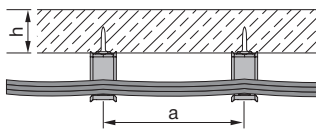
### 5.1 Fastener system recommendations

Fastening condition	Element	Fastener	Tool type
Element to concrete	X-ECH-FE MX	X-P 17 B4 MX	BX 4-22 (01)
	X-ECH-FE MX	X-P 17 B3 MX	BX 3-IF (01), BX 3-ME (01), BX 3 (02), BX 3-L (02), BX 3-ME (02), BX 3-22 (03), BX 3-ME-22 (03)

• For more details, please refer to the chapter Accessories and consumables compatibility in the [Direct Fastening Technology Manual \(DFTM\)](#).

## 6 APPLICATION REQUIREMENTS

### 6.1 Base material properties



Fastening to steel

Fastening condition	Base material thickness h [mm]	Element spacing a [mm]
Fastening to concrete	≥ 60	≤ 600

### 6.2 Service properties

Element	Service type
X-ECH-FE 15 MX, X-ECH-FE 30 MX	Cable

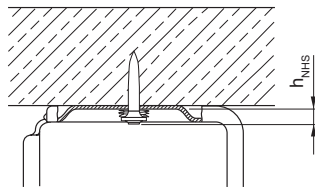
## 7 PERFORMANCE DATA

### 7.1 Recommended loads under quasi static/static and fire loading

Fastening condition	Application	Element	Tension load $N_{rec}$ [kN]	Fire rating	References
Element to concrete	Circuit integrity system	X-ECH-FE 15 MX	0.02	E30-E90	<a href="#">P-2401/198/16-MPA BS</a> <a href="#">P-MPA-E-16-010</a> <a href="#">P:1023 DMT DO</a>
		X-ECH-FE 30 MX	0.04		
	Non-circuit integrity system	X-ECH-FE 15 MX	0.02	F90	
		X-ECH-FE 30 MX	0.04		

## 8 QUALITY ASSURANCE

### 8.1 Fastening inspection



Element to steel

Fastening condition	Fastener stand-off $h_{NHS}$ [mm]
Element to concrete	3.0-7.0

- i • Visible setting failures must be replaced with a new fastener, with a distance  $\geq 100$  mm.
- These are abbreviated instructions which may vary by application.
- Always review/follow the instructions accompanying the product.

## 9 ORDERING INFORMATION

### 9.1 Item number and description

Designation	Item number	Description
X-ECH-FE 15 MX	2142823	Metal cable holder
X-ECH-FE 30 MX	2142822	Metal cable holder



Hilti Aktiengesellschaft  
9494 Schaan, Liechtenstein  
P +423-234 2965

[www.facebook.com/hiltigroup](https://www.facebook.com/hiltigroup)  
[www.hilti.group](https://www.hilti.group)